

SUSTAINABILITY CHALLENGE

It doesn't matter what Sweden does, it's such a small country.



FACTS

11 TONS OF CO₂
is emitted by an average Umeå resident per year (2022).



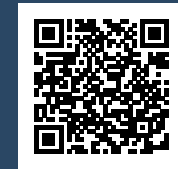
2050 TARGET
1 TON OF CO₂
per person and year.



4.2 PLANETS
is required if everyone on Earth would live like the average Swede.

CONSIDER THIS

What is your ecological footprint?
Use the footprint calculator to find out how many planets it takes to support your lifestyle.



UMEÅ UNIVERSITY



UMEÅ UNIVERSITY



UMEÅ UNIVERSITY

SUSTAINABILITY CHALLENGE



I need to commute by car because ...

FACTS

Did you know ...



Domestic transports, flights not included, represent about

30 PER CENT

of Swedish carbon dioxide emissions.

In Umeå municipality, transports generate about

40 PER CENT

of all climate-affecting emissions.

40 per cent of all travel in Umeå is made by car.

58 per cent of all travel in Umeå is made by bike, bus or by foot. A target is to increase these travels to **65 per cent** by 2025.

CONSIDER THIS

1

Your sustainable choices start already in the morning when you choose how to get to work, which transport do you choose?

2

What could make you choose a more sustainable mode of transport?



UMEÅ UNIVERSITY



UMEÅ UNIVERSITY



UMEÅ UNIVERSITY

SUSTAINABILITY CHALLENGE

An increasing number of staff means we need more office space.

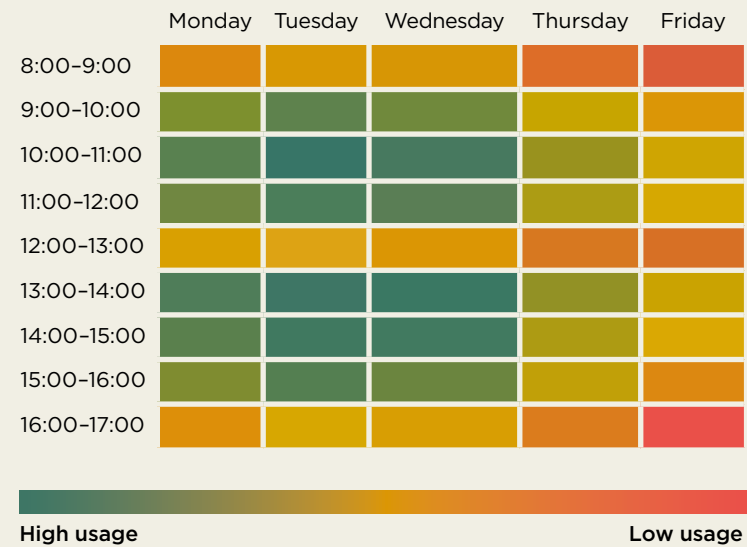


FACTS



2.5 hours/day

is how long we use our office on average.



CONSIDER THIS

1

- How do you use your office?
- Over long or short periods?
 - Every day or only some days?



UMEÅ UNIVERSITY



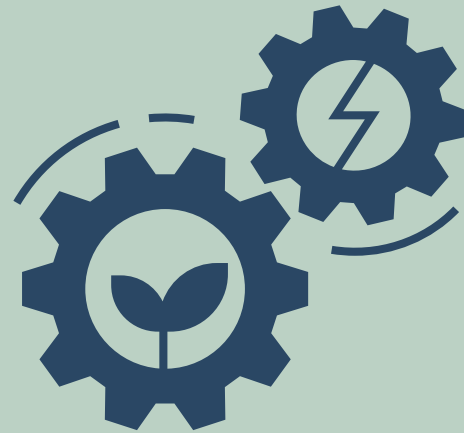
UMEÅ UNIVERSITY



UMEÅ UNIVERSITY

SUSTAINABILITY CHALLENGE

If we would set environmental requirements on our suppliers, we wouldn't get any suppliers.



FACTS



48,769

goods and services in Sweden (April 2019) are labelled with Svanen, EU Ecolable, FairTrade, KRAV, Bra Miljöval, TCO Certified or MSC.

CONSIDER THIS

1

Do you make use of the environmental indicators available in the purchase platforms Wisum and Raindance?

2

If a supplier cannot meet our climate or other sustainability requirements, or if you don't know how services are carried out, should you really be purchasing their goods or services?



UMEÅ UNIVERSITY



UMEÅ UNIVERSITY



UMEÅ UNIVERSITY